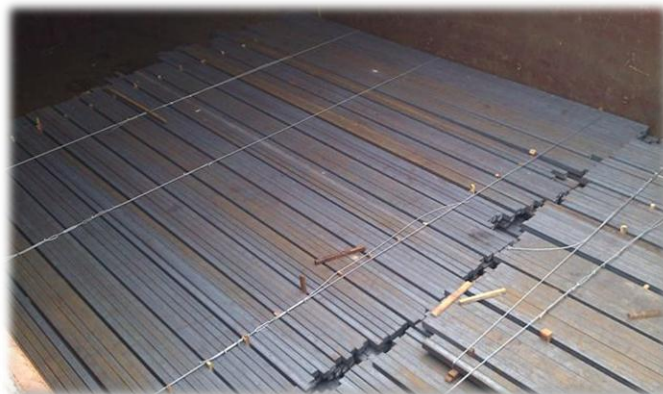


Queen Yan

01. General:

Name: Queen Yan
Delivered: June 2011
Call sign: VRIS5
IMO: 9620293
Class: CCS
Flag: HK



02. Dimensions:

Summer dwt: 8631 dwt
Draft: 7.6m
Loa: 112.21m
Beam: 19m
Gt: 6980
Nt: 2928

Number of holds: 2
Dimension of holds (L x B):

Hold 1: 35.7m x 16.4m
Hold 2: 34.3m x 16.4m



03. Capacities:

Grain cubic breakdown:
Ho 1: 6404.6 cbm
Ho 2: 6336.6 cbm
Ttl abt 12740.9 cbm grain

04. Speed and consumption:

abt 12.8 knots on abt 14.5mt 180cst + 0.95mt MGO

Port working with full crane 1.4mt MGO

abt 0.85mt mgo idle in port

05. Cranes:

SWL 30MT, twin crane (combinable to 60MT), Maker / Macgregor

06. Engine:

main engine: CME-MAN B&W7L32/40, 3360KW @ 750rpm /1SET
aux engine: Cummins NTA 855-D(M)/280KW/3SETS

Information given is for reference only. No warranty or representation is made as to the accuracy of the information provided.