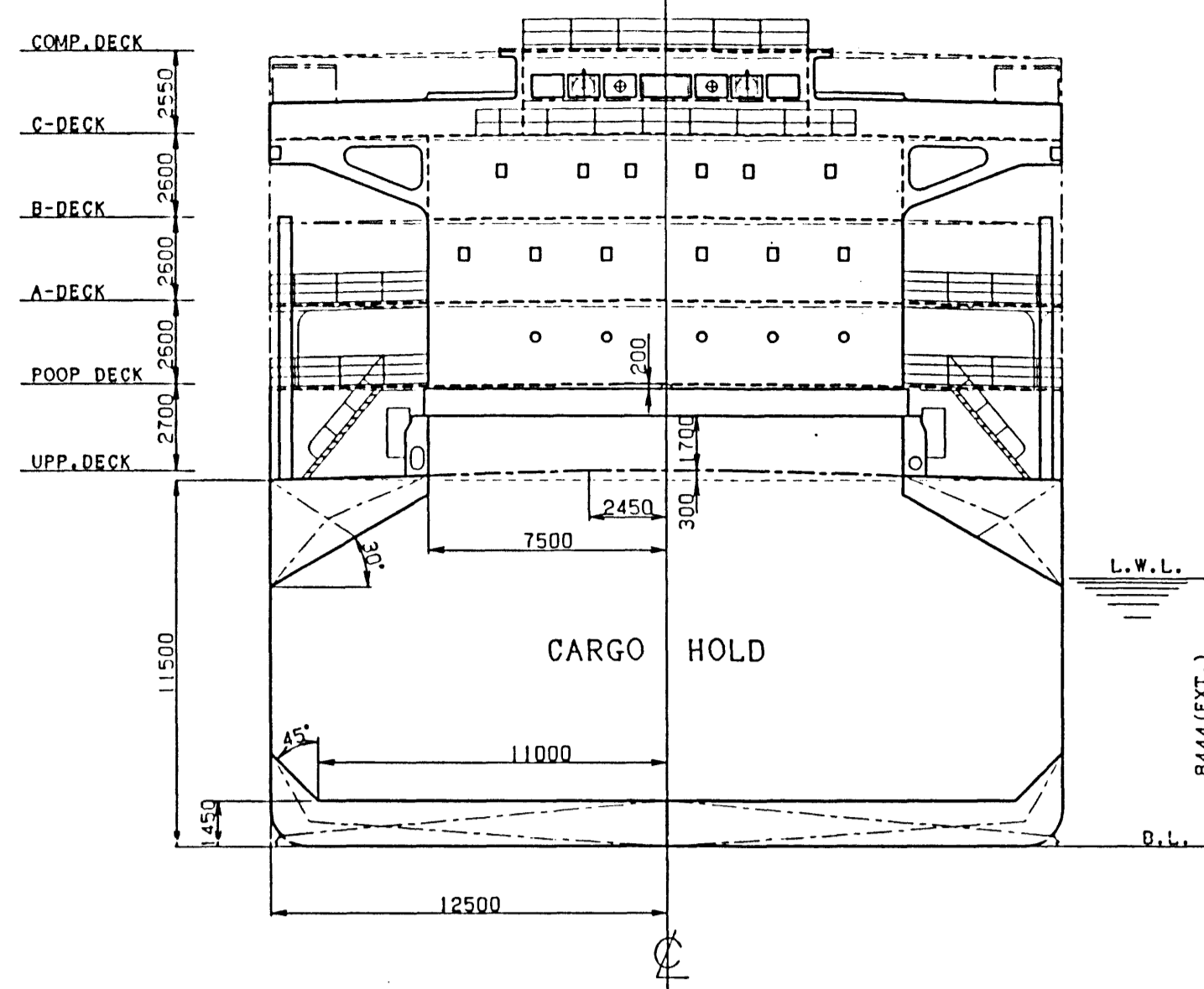
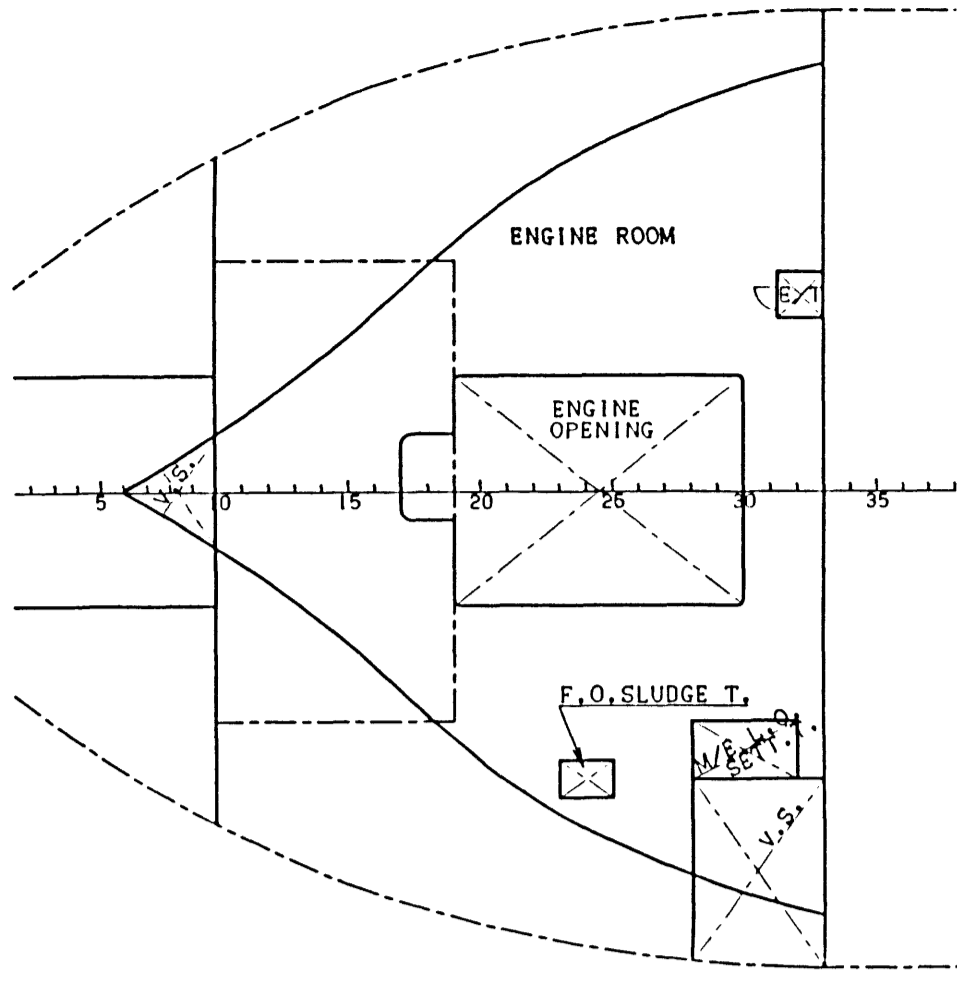


GENERAL ARRANGEMENT

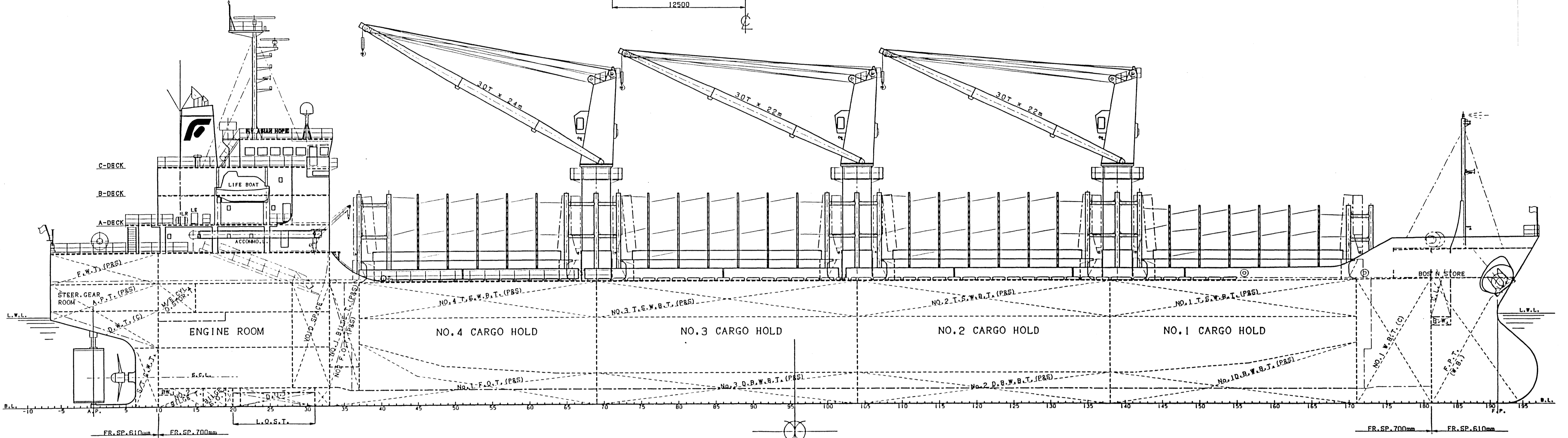
SCALE : 1/200

3RD. DK



PRINCIPAL PARTICULARS

LENGTH O. A.	139.92 m
LENGTH B. P.	132.00 m
BREADTH (MLD)	25.00 m
DEPTH (MLD)	11.50 m
FULL LOAD DRAFT (SUMMER EXT.)	8.444 m
CLASS	NK, NS ⁺ (BC, EQ C LB) (ESP), MNS ⁺
GROSS TONNAGE	11,751 t
DEAD WEIGHT (SUMMER)	18,829mt
MAIN ENGINE	MAN-B&W 7S35MC(Mark7) X 1
M.C.O.	5,180 kW X 173 min ⁻¹
C.S.O. (85% M.C.O.)	4,403 kW X 164 min ⁻¹
SERVICE SPEED	
(C.S.O. with 15% S.M. at DESIGNED DRAFT=8.40m) abt.	13.00kts
COMPLEMENT	22 p



POOP DECK

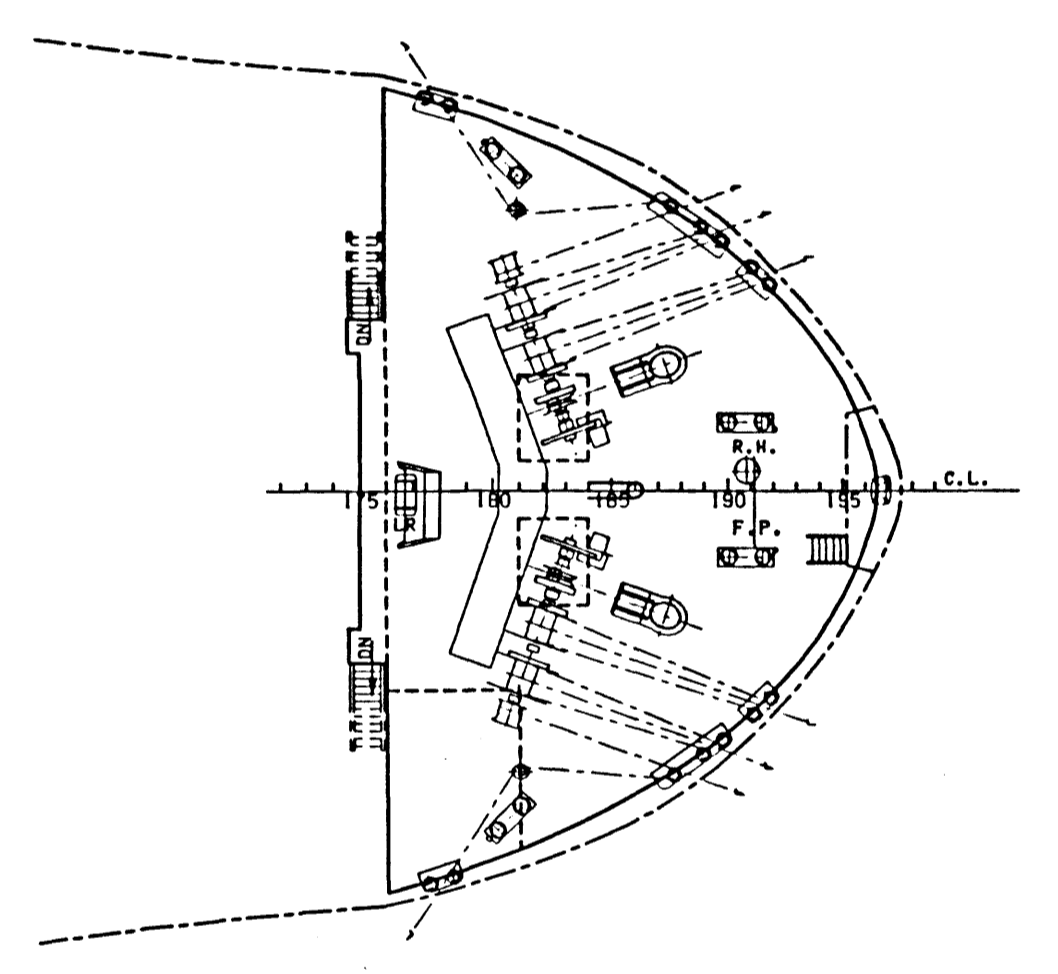
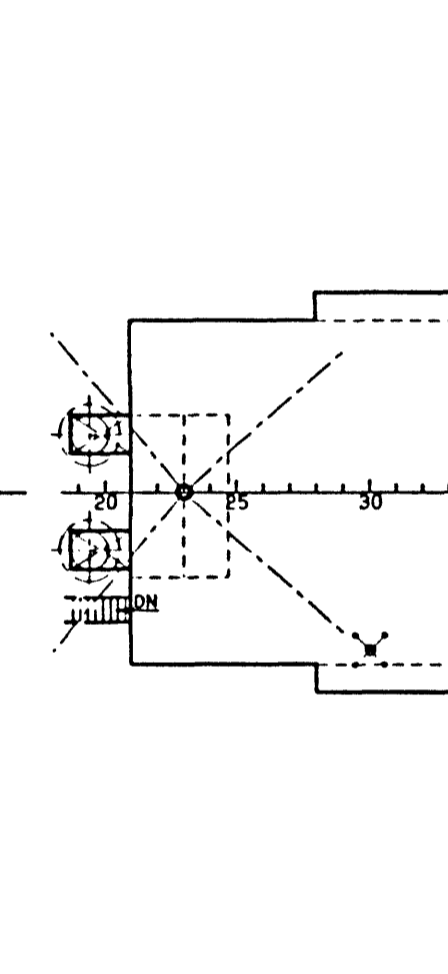
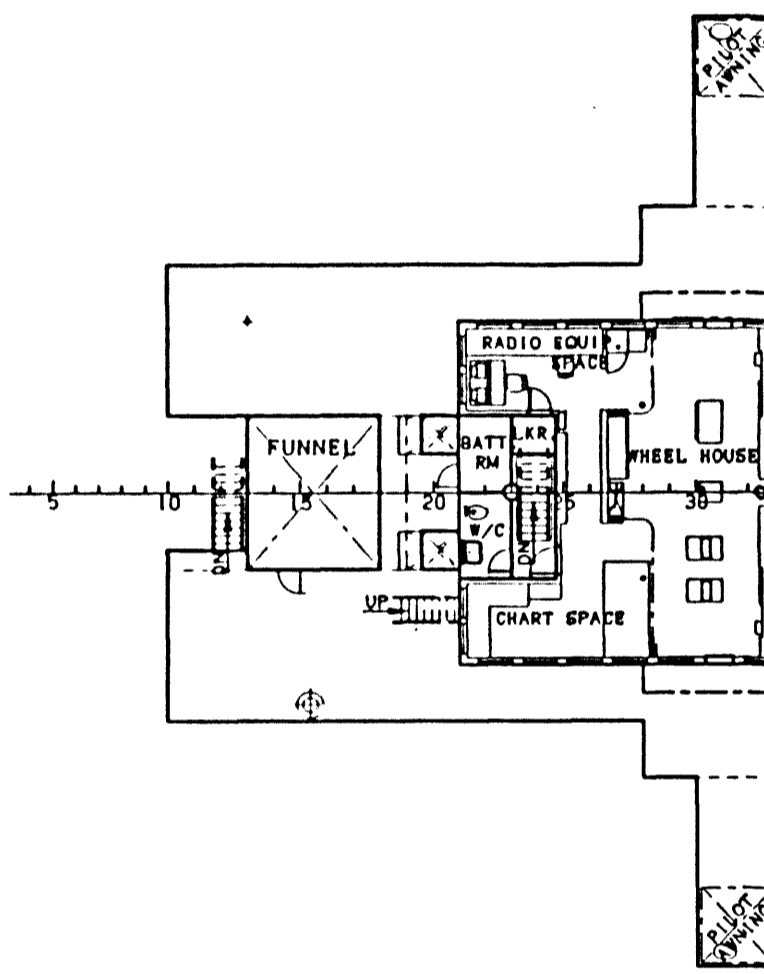
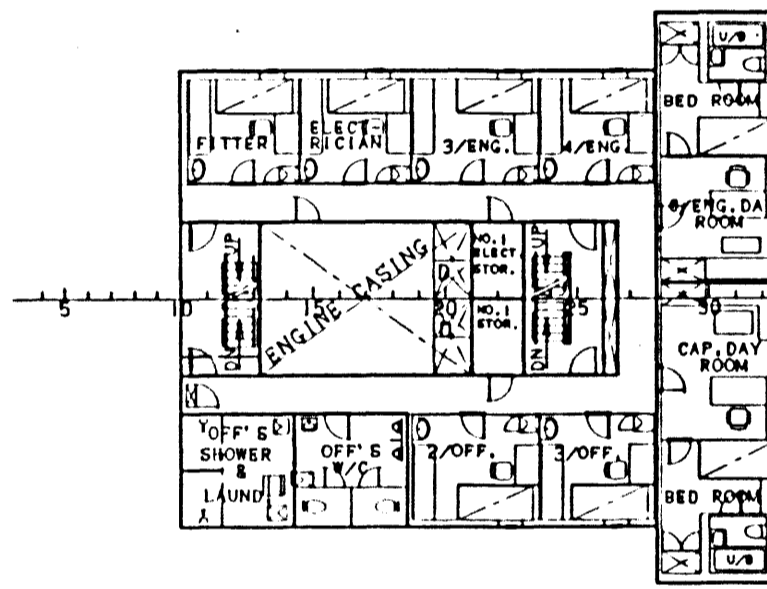
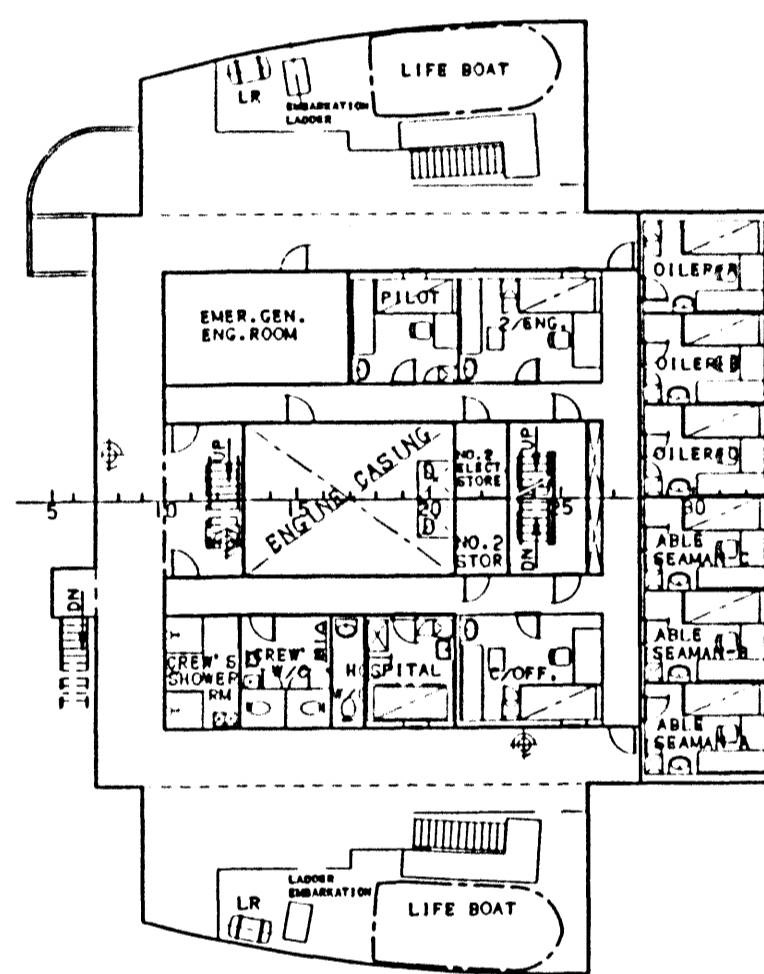
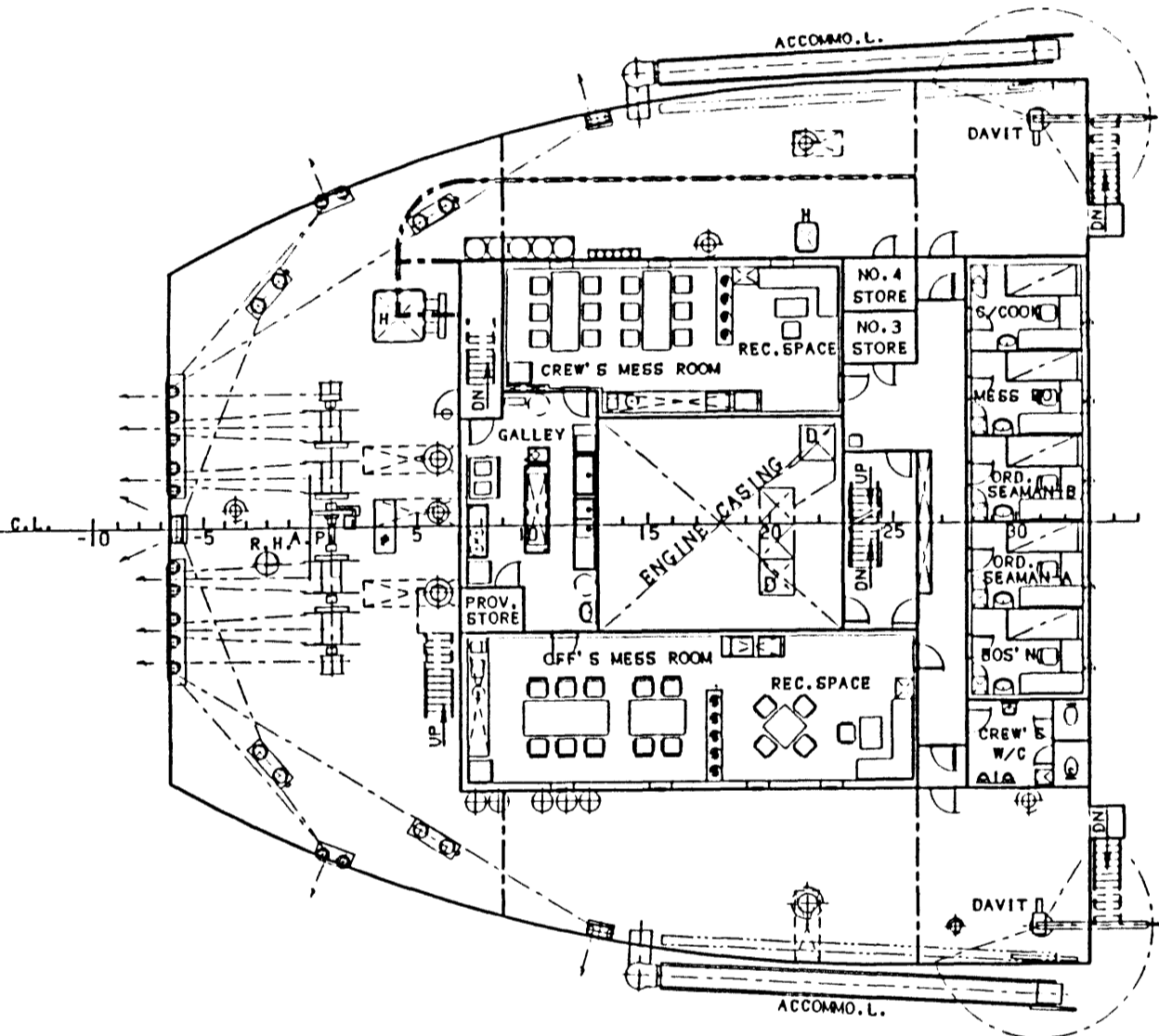
A-DECK

B-DECK

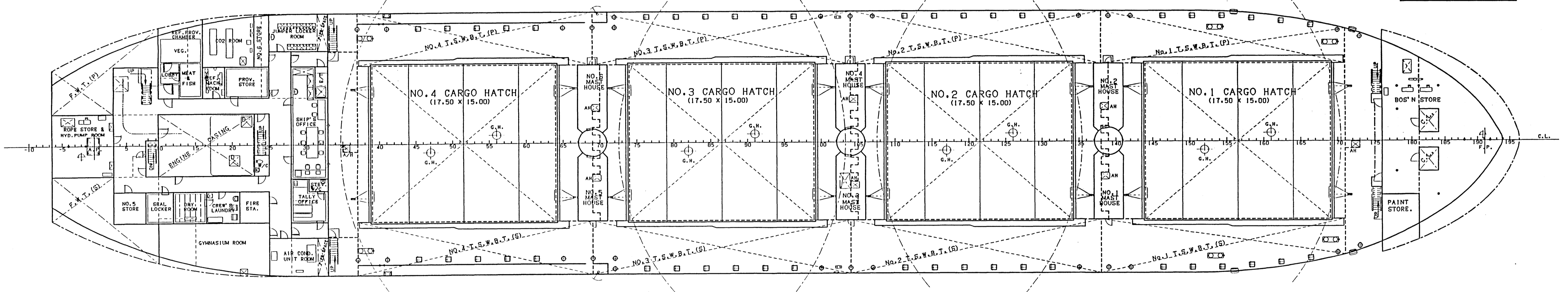
C-DECK

COMP. DECK

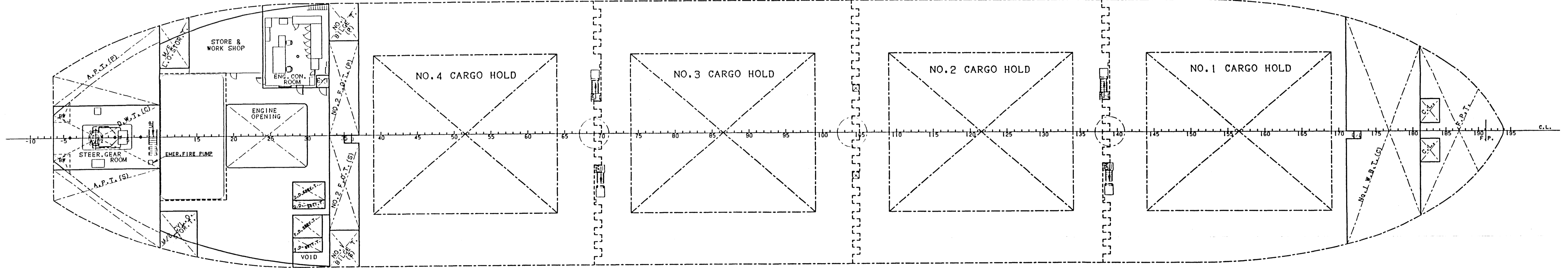
F' CLE DECK



UPPER DECK



HOLD PLAN



TANK TOP

