

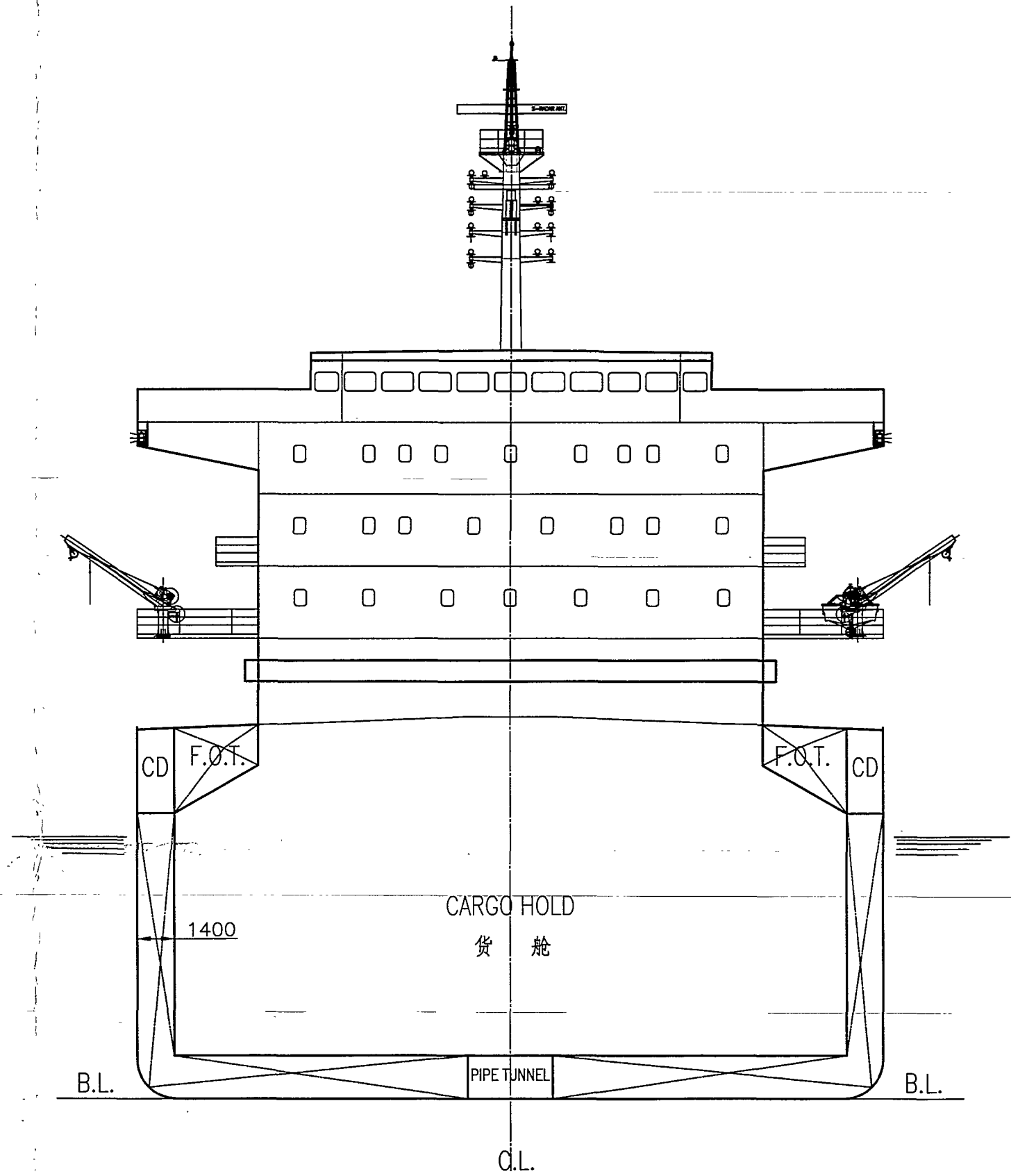
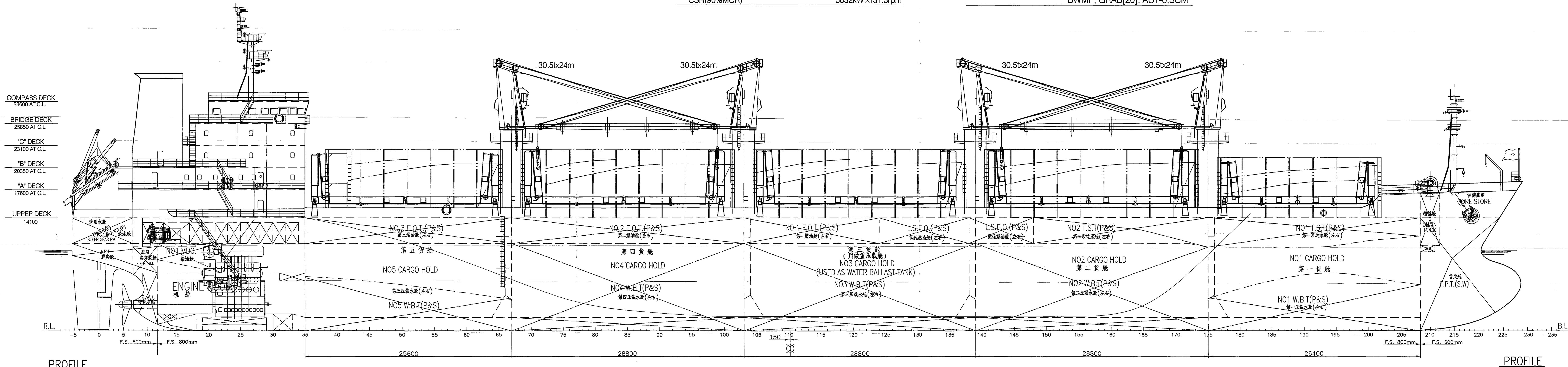
PRINCIPAL PARTICULARS

LENGTH O.A.	abt.179.90 m
LENGTH B.P.	171.50 m
BREADTH MLD.	28.40 m
DEPTH MLD.	14.10 m
DESIGNED DRAFT	10.00 m
SCANTLING DRAFT	10.15 m
DEADWEIGHT (DESIGNED DRAFT)	abt. 31,800 M.T.
DEADWEIGHT (SCANTLING DRAFT)	abt. 32,500 M.T.
GROSS TONNAGE (I.C.T.M.)	abt. 20,700

COMPLEMENT	25P
SPEED	
SERVICE (d=10.00m, CSR(90%MCR) with 15% S.M.)	abt. 13.7 knots
(d=10.15m, CSR(90%MCR) with 15% S.M.)	abt. 13.6 knots
TRIAL MAX.	abt.15.2 knots

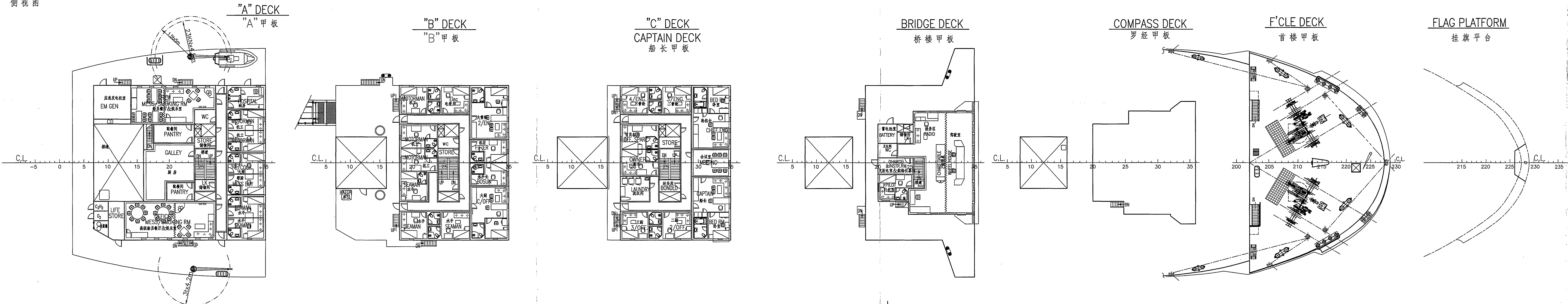
MAIN ENGINE	
MAN B&W 6S42MC (MARK7)	1 SET
MCR	6480kW x136.0rpm
CSR(90%MCR)	5832kW x131.3rpm

CLASS NOTATION ★ CSA ★ CSM, Bulk Carrier, CSR, BC-A
 (HoldS Nos.2&4 may be Empty),
 Strengthened for Heavy Cargoes,
 ESP, In-Water Survey,
 BWMP, GRAB[20], AUT-0, SCM



PROFILE
侧视图

PROFILE



FINISHED PLAN
完工图
DATE
SHANGHAI BESTWAY
MARINE ENGINEERING DESIGN CO., LTD
上海贝斯特海洋工程设计股份有限公司

SHIP NAME: LUCY OLDENDORFF
IMO No. : 9587166

BUILDER	Taizhou Maple Leaf Shipbuilding Co.,Ltd	HULL NO.	MLBC31800-026
OWNER		CLASS	CCS
TITLE	31,800 DWT BULK CARRIER	FINISHED PLAN	
DESIGNED	李锐志	DWG. No.	JH416G2-050-02
CHECKED	张程明	SCALE	1:200
VERIFIED	杨永华	WEIGHT	
APPROVED		PAGE	1/2
SHANGHAI BESTWAY MARINE ENGINEERING DESIGN CO., LTD		111 Cao Bao Road Shanghai, CHINA P.C:200233	
BESTWAY		Tel:86-21-6436 5500 Fax:86-21-5448 7783 Email: luckway@mail.online.sh.cn	

