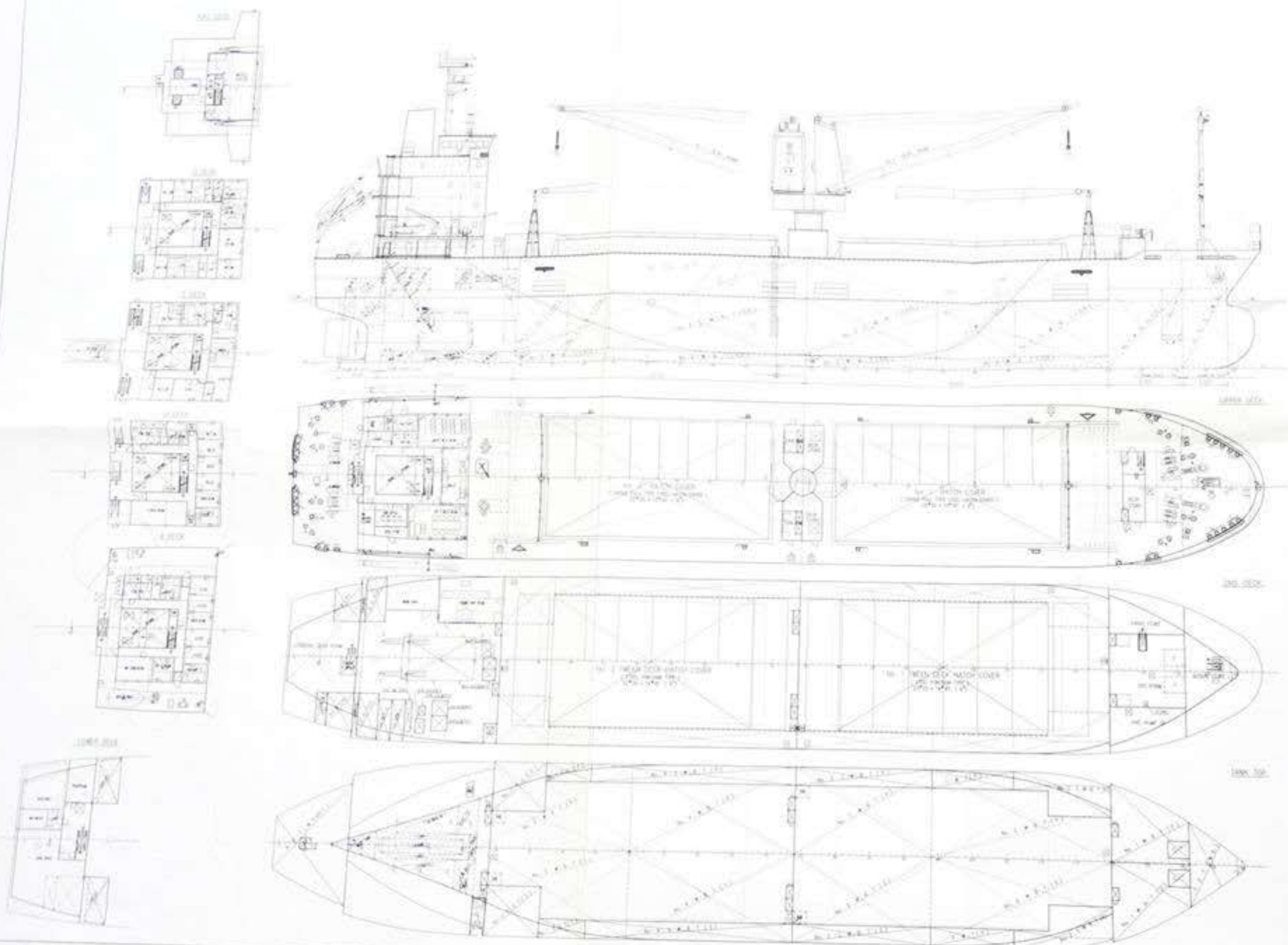


REVISIONS	ALTERNATION		
	NO.	DESCRIPTION	DATE



LENGTH (O.C.)	127.00 M
LENGTH (P.P.)	122.00 M
BREADTH (M.O.)	18.80 M
DEPTH (M.O.)	12.70/8.00 M
DRAUGHT (DESIGNED)	7.90 M
DISPLACEMENT (DESIGNED)	8932 MT
GROSS TONNAGE (DESIGNED)	1141 T
MAIN ENGINE	MANUAL DIESEL x 1 SET
MAX. CONTAINER CAP. (NO.)	4500 P/S x 320 ROW
MAX. CONTAINER (NO.)	3425 P/S x 343 ROW x 3 ROW
SERVICE SPEED (15% W/C 15% S.M.)	10.5 KTS
HOLD CAPACITY (1 BAY)	15,448 M ³
(2 BAYS)	12,881 M ³
COMP. INTY.	23 H
CLASS NOTATION	PC 50' (RC-VL TO 0.00) MNS



FINAL PLAN
IMO 9509114

SHIP NAME	TRIFRIEND	HULL NO.	
O.W.N.E.R.	OCEAN FRIEND CORP. LIMITED		2175
SHIP TYPE	8,500 DWT GENERAL CARGO SHIP	DWG NO.	E-001
MANAGED BY	<i>CH Lee</i>	FILE NO.	
DESIGNED BY	<i>CC Lee</i>	SCALE	1/200
CHECKED BY	<i>CC Lee</i>	DATE	JUL 09 2011
DESIGNED BY	<i>Kip</i>		
DRAWN BY	<i>Tipta</i>		

高鼎造船股份有限公司
JADE SHIPBUILDING CO., LTD.