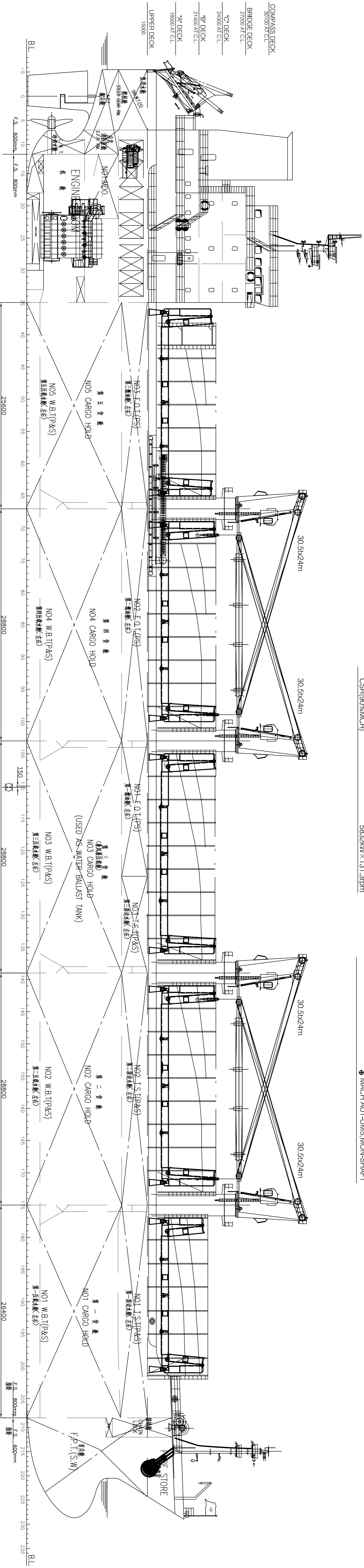


PRINCIPAL PARTICULARS

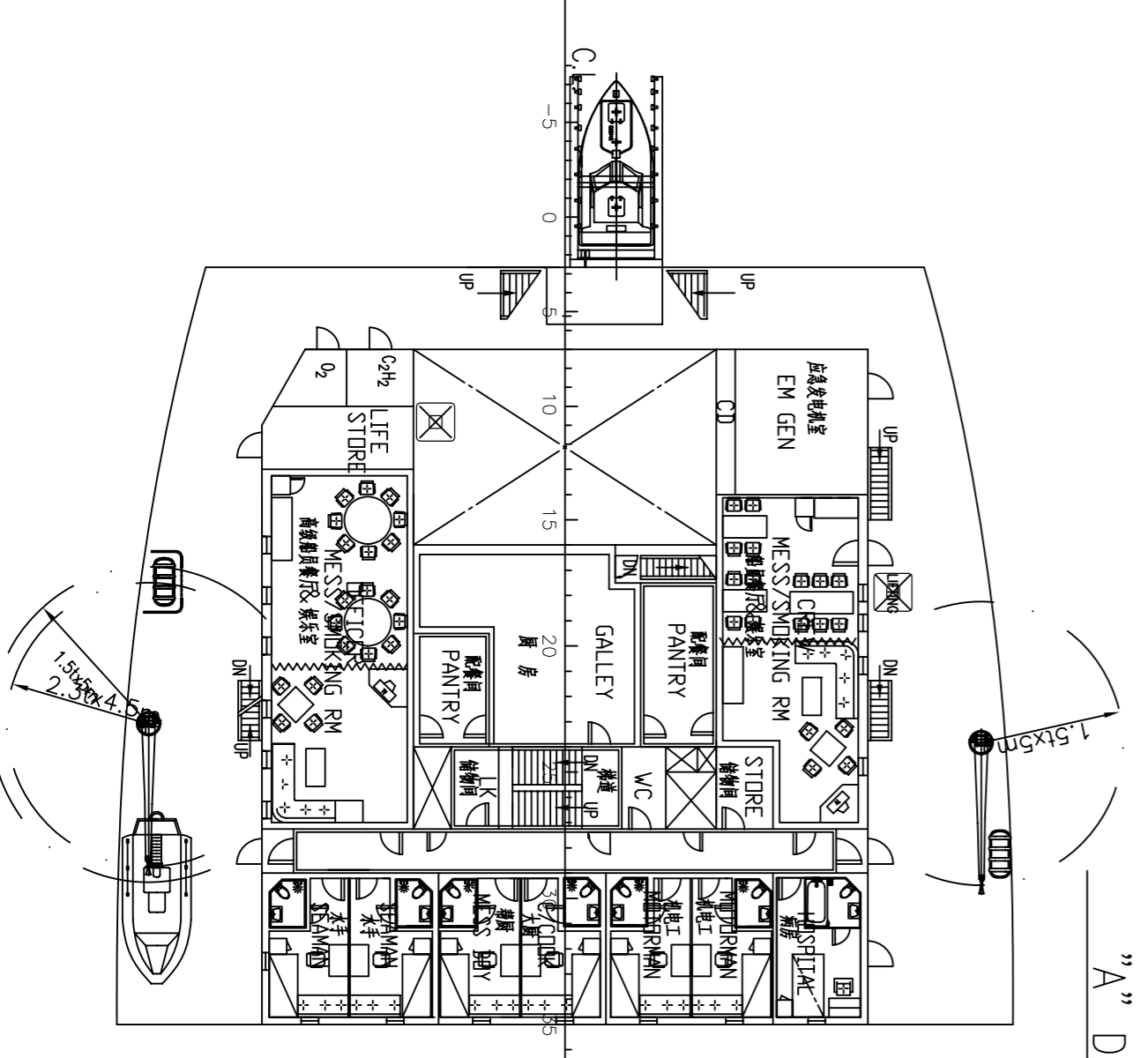
| | |
|------------------------------|------------------|
| LENGTH O.A. | abt. 179.90 m |
| LENGTH B.P. | 171.50 m |
| BREADTH M.L.D. | 28.40 m |
| DEPTH M.L.D. | 15.00 m |
| DESIGNED DRAFT | 10.00 m |
| SCANTLING DRAFT | 10.80 m |
| DEADWEIGHT (DESIGNED DRAFT) | abt. 31,500 M.T. |
| DEADWEIGHT (SCANTLING DRAFT) | abt. 35,000 M.T. |
| GROSS TONNAGE (I.C.T.M.) | abt. 21,620 |

| | |
|--|-----------------|
| COMPLEMENT | 25P |
| SPEED | abt. 13.7 knots |
| SERVICE(=10.00m CSR(90%MCR) with 15% S.M.) | abt. 15.2 knots |
| TRIAL MAX. | abt. 15.2 knots |

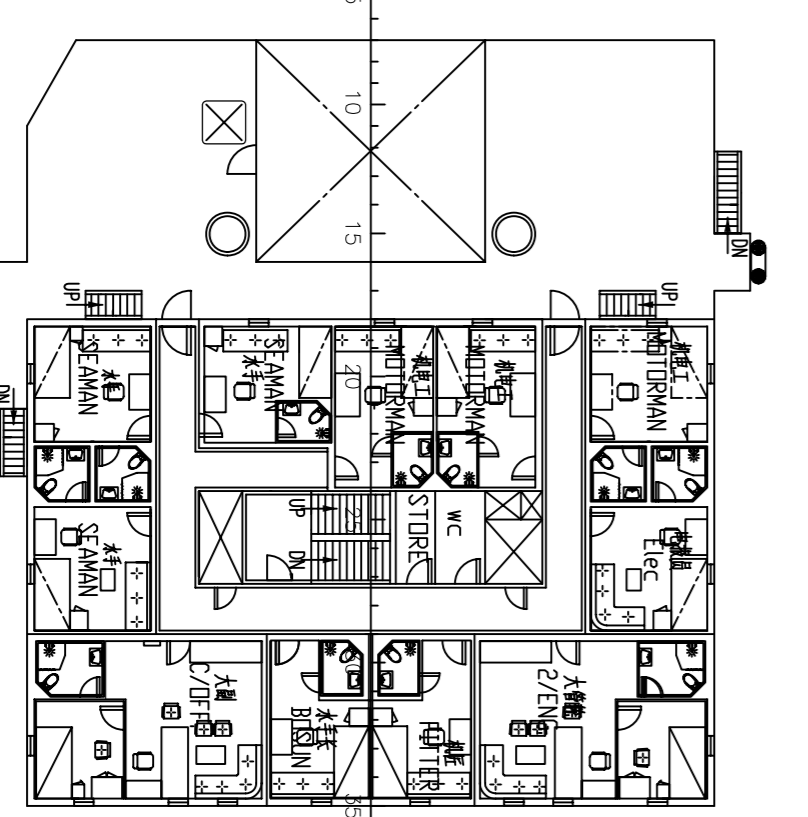
| | |
|------------------------|--|
| CLASS NOTATION | BY: 1 HULL Bulk Carrier CSR, BCA, (Hold Nos. 2, 4 May be empty), ESP, VESSTAR-HULL LIN WATER SURVEY (GPABQ2) MACH AUT-LUMS MON-SHAFT |
| MAIN ENGINE | 1 SET |
| MAN B&W 6S42WC (MARK7) | 6480kW × 130.0rpm |
| MCR | 5832kW × 131.3rpm |
| CSR(90%MCR) | |



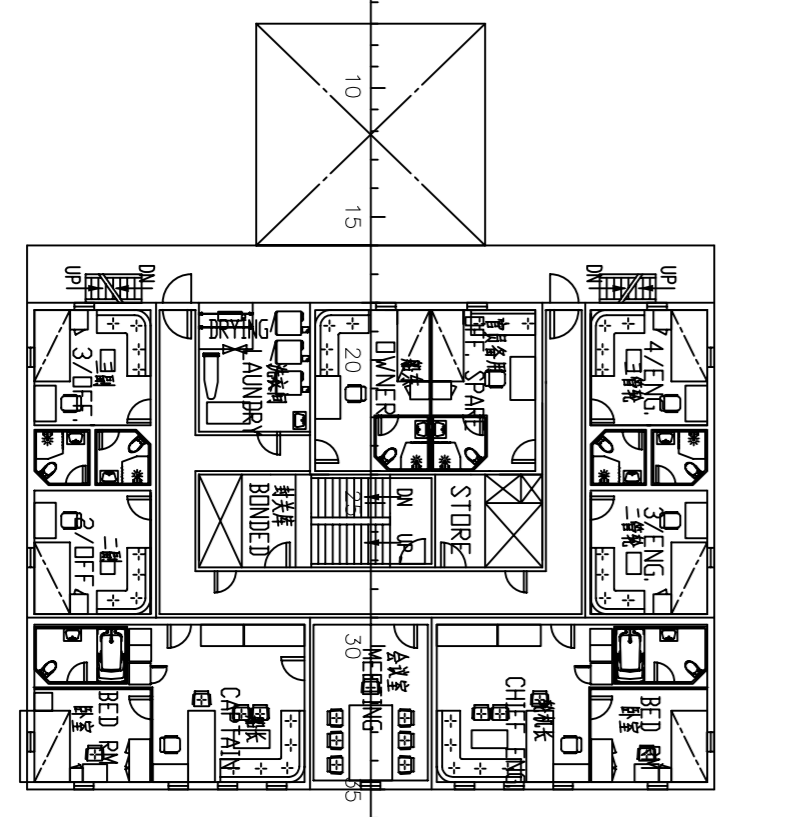
PROFILE
横剖面图



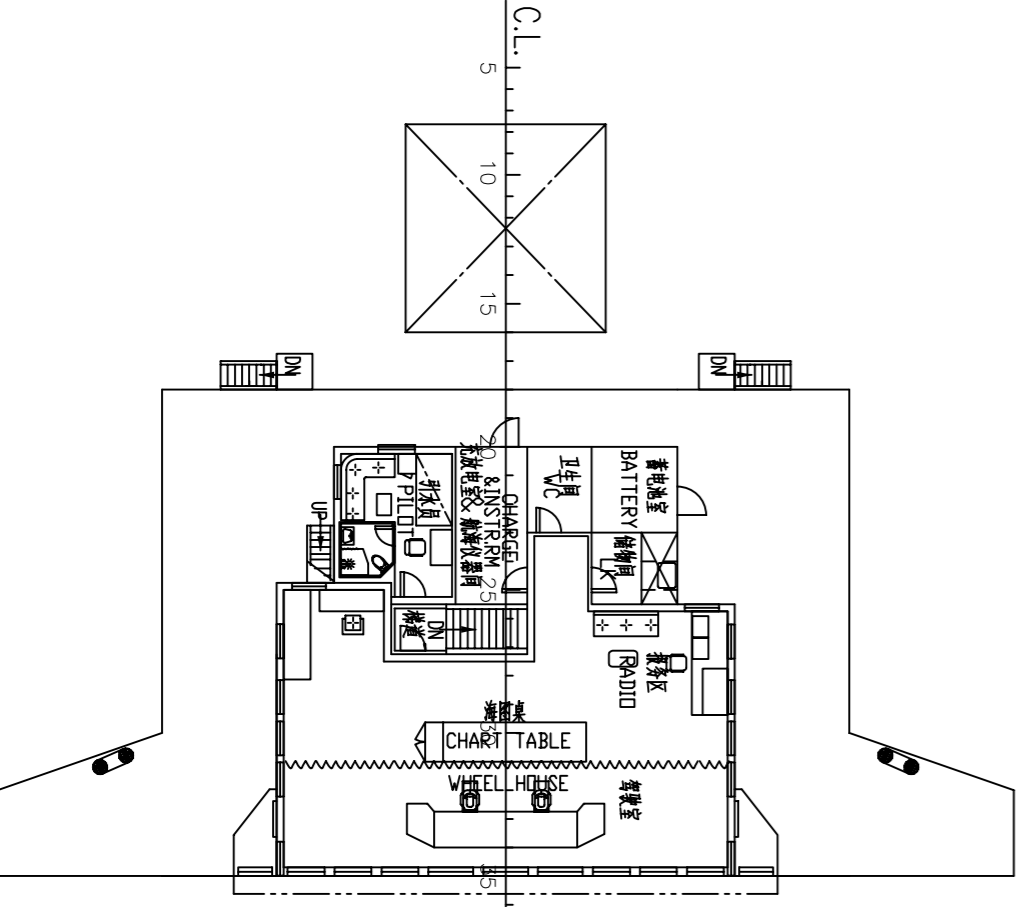
"A" DECK



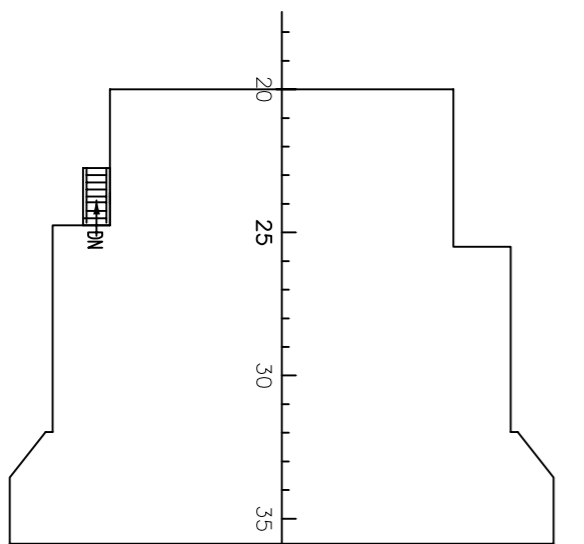
"B" DECK



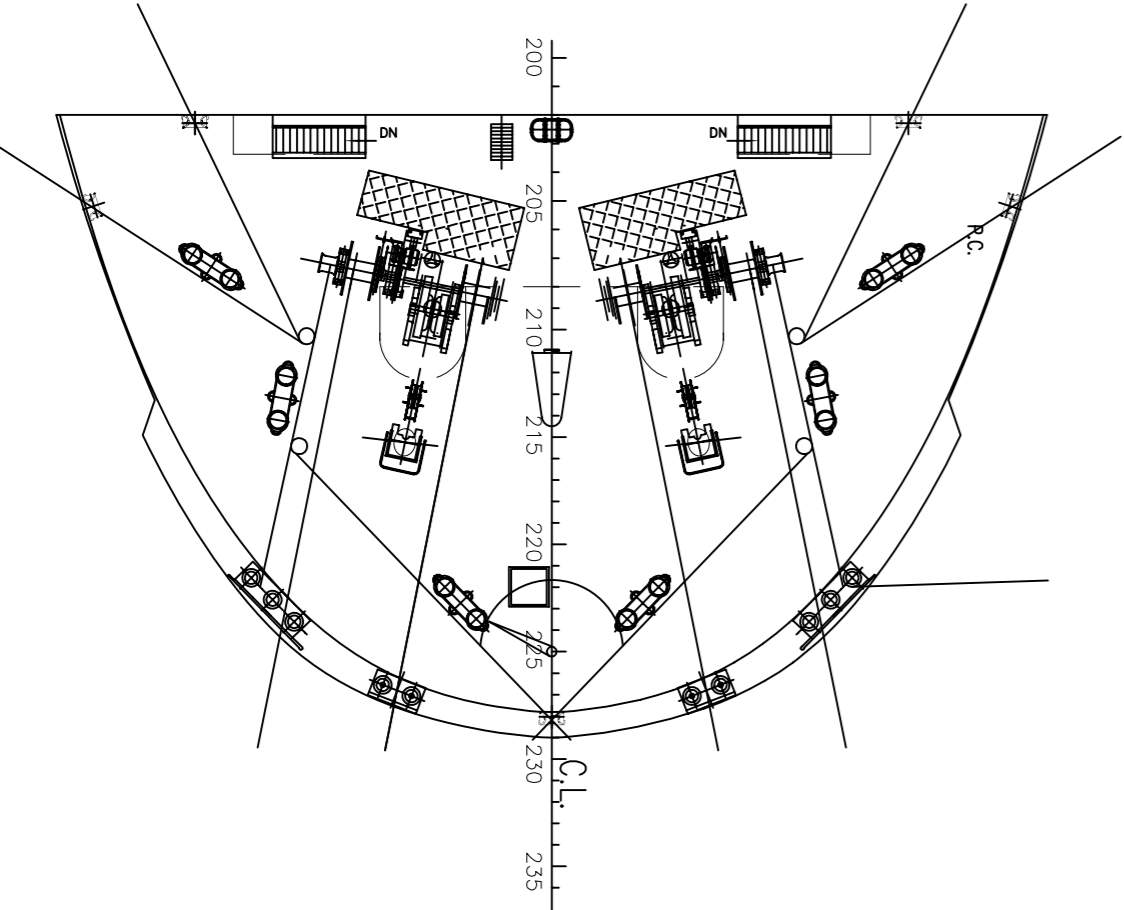
"C" DECK



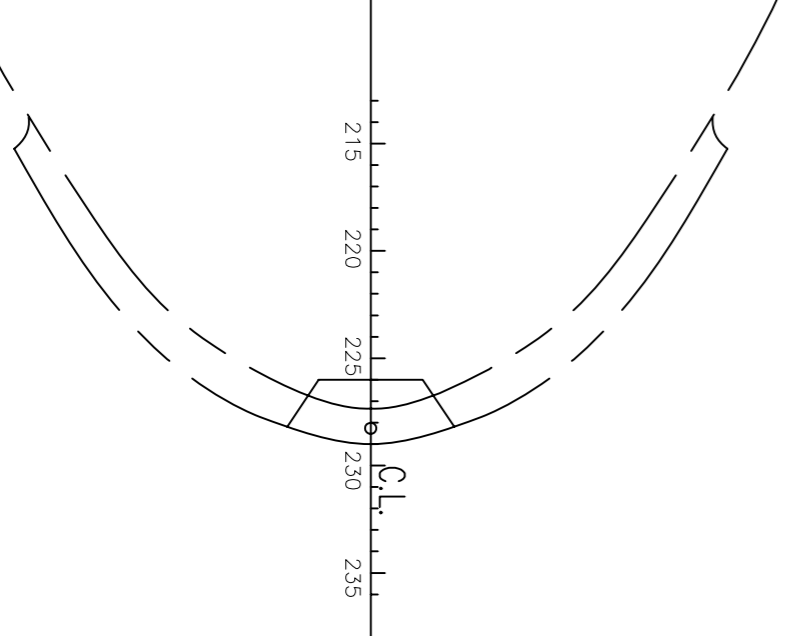
BRIDGE DECK



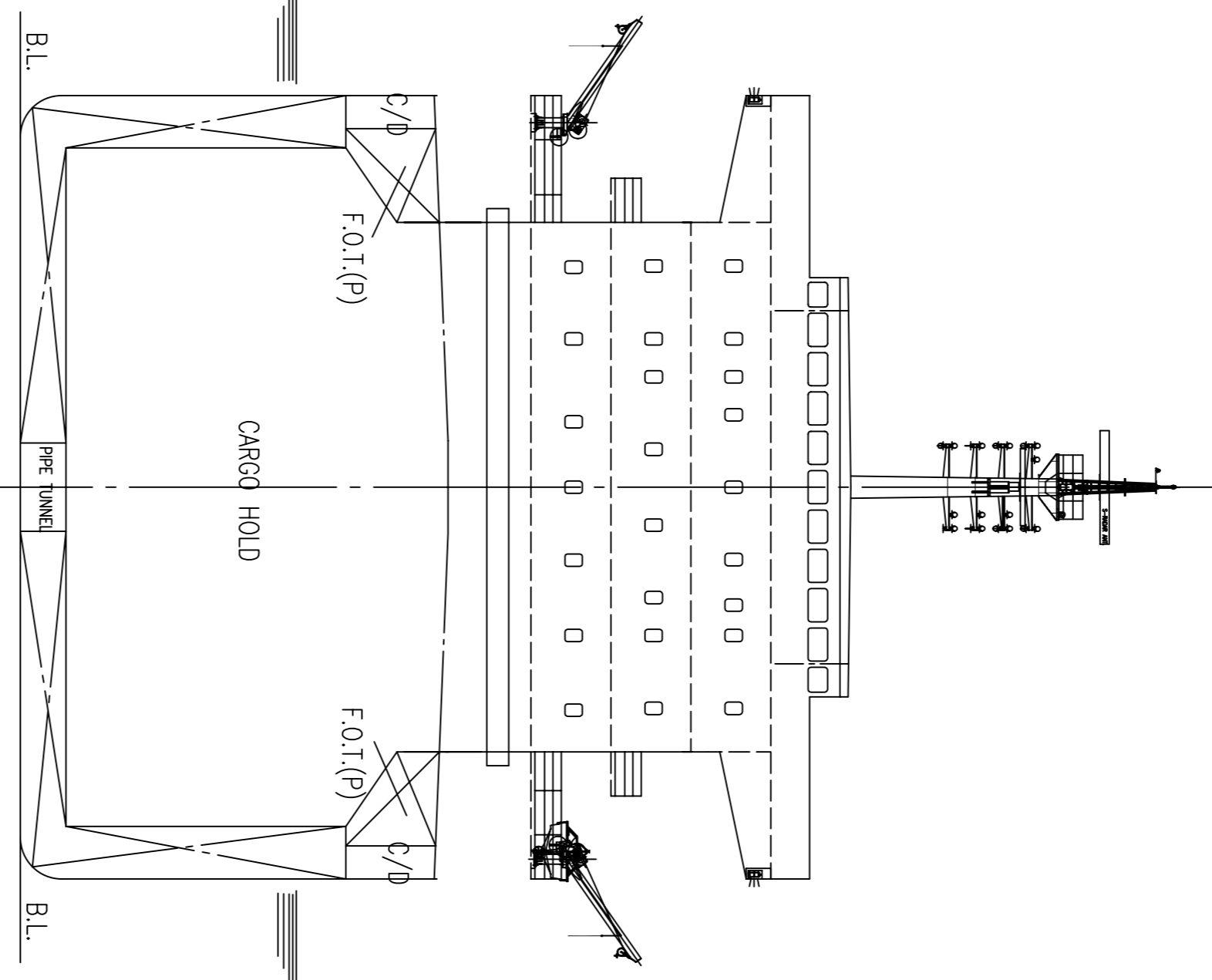
COMPASS DECK



F'CLE DECK



FLAG PLATFORM



| | | | |
|----------|------------------------------|------------|--------------|
| BUILDER | NANTONG CHANGGONSHA SHIPYARD | HULL NO. | CCS0807 |
| OWNER | PARAKOU SHIPPING LTD. | CLASS | BV |
| TITLE | 35,000 DWT BULK CARRIER | DESIGN NO. | JH429-100-05 |
| DESIGNED | | SCALE | 1:500 |
| CHECKED | | DATE | 01.02.1908 |
| APPROVED | | | |

| | | | |
|--|--|--|--|
| SHANGHAI BESTWAY MARINE ENGINEERING DESIGN CO.,LTD | | | |
| 111 Cao Bai Road Shanghai, CHINA P.0200233 | | | |
| Tel:86-21-6495 5500 Fax:86-21-5449 7783 | | | |
| E-mail: bestway@mal.com.cn | | | |
| BESTWAY | | | |

